

Single Mode Broadband Tree Coupler

The Single Mode Broadband Tree Coupler module has either single-window or dual-window types. It can be widely used in the fiber optical networks, and provides excellent uniformity and low insertion loss. The product can be assembled to meet the customer requirements and has passed the Bellcore GR-1209-CORE specifications.

Features

- Wide Bandwidth
- Low Excess Loss
- Accurate Performance
- High Stability and Excellent Reliability

Applications

- Telecommunications
- CATV Network
- Access Network
- Optical Instrument



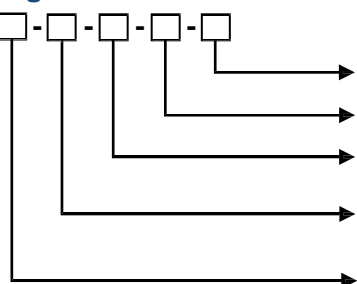
Specifications

Item	Unit	Specifications									
Center Wavelength	nm	1310 or 1550									
Operating Bandwidth	nm	±40									
Configuration(1xN or 2xN)		3	4	5	6	8	12	16	24	32	
Insertion Loss	dB	5.4	7.0	8.0	9.2	10.4	12.8	14.4	15.3	17.4	
Directivity	dB	≧ 55									
Return Loss	dB	≧ 55									
PDL	dB	0.2	0.2	0.3	0.3	0.3	0.4	0.4	0.4	0.5	
Operating Temperature	°C	0 to +70									
Storage Temperature	°C	-40 to +85									

Item	Unit	Specifications									
Center Wavelength	nm	1310 / 1550									
Operating Bandwidth	nm	±40									
Configuration(1xN or 2xN)		3	4	5	6	8	12	16	24	32	
Insertion Loss	dB	5.6	7.2	8.2	9.5	10.7	13	14.8	15.7	17.8	
Directivity	dB	≧ 55									
Return Loss	dB	≧ 55									
PDL	dB	0.3	0.3	0.45	0.45	0.45	0.6	0.6	0.75	0.75	
Operating Temperature	°C	0 to +70									
Storage Temperature	°C	-40 to +85									

Ordering Information

SMC-□-□-□-□-□



Connectors Type: FC/APC, FC/UPC, SC/APC, SC/UPC or others

Fiber Length (Unit: M)

Cable Type: 025:Φ0.25mm, 09:Φ0.9mm

Wavelength: 131:1310nm, 155:1550nm (Single-window)

135:1310/1550nm (Dual-window), 345:1310/1490/1550nm (Tri-window)

Type: 14:1x4, 18:1x8, 216:2x16